



*Mission, People & Partners*

# Eglin AFB Base Defense Strategy



Mr. Dale Marks  
Executive Director  
96th Test Wing  
17 Jan 2025



# National Defense Re-Posturing



*Mission, People & Partners*



## The Homeland is No Longer a Sanctuary

- The emergence of Global Power Competition has significantly increased the need for multi-domain security.
- Our adversaries are creating strategic challenges in multiple areas, mission domains and across geopolitical boundaries. In this environment, we must partner for success.
- Increased security concerns across the nation
  - NORTHCOM directive
- The 96th Test Wing is prioritizing the **defense of the installation** across all warfighting domains.

**Aug. 20, 2024**

**Palmdale UFO scare leads to revelations about mystery drones incursions over secretive Plant 42**

**Oct. 15, 2024**

**University of Minnesota student from China given 6-month prison term for taking drone photos over naval shipyard**

**Sept. 16, 2024**

**China's "Spy Chip" At U.S. Seaports Shocks Researchers; Report Claims Chinese Firm Wanted Remote Access**

**Nov. 26, 2024**

**US Air Force in UK says drones have been spotted flying over bases in England**

**Oct. 15, 2024**

**Pentagon confirms that unidentified drones flew over Langley Air Force Base over 17 days last December**

**Dec. 12, 2024**

**Chinese man arrested, accused of flying drone over and taking photos of Vandenberg Space Force**

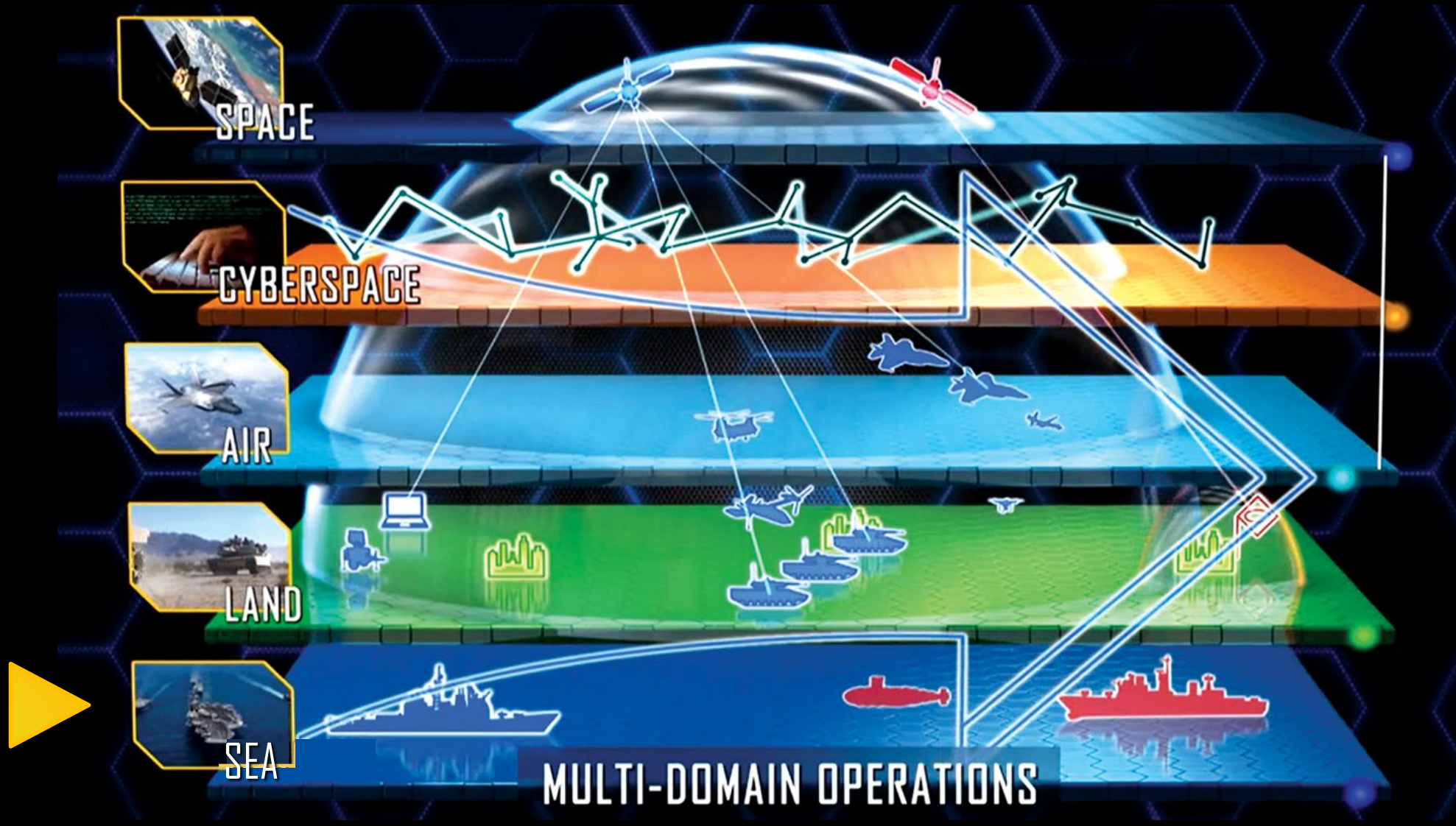
***Demand signal to bolster US homeland security***



# Warfighting Domain Categories

*[Directly applicable to base defense strategy]*

*Mission, People & Partners*





# Sea Domain Focus Area

*[Governing Policies]*



*Mission, People & Partners*

## Federal

### Code of Federal Regulation (CFR) Title 33 Part 334:

- U.S. Army Corps of Engineers is charged with prescribing procedures for establishing, amending and disestablishing danger zones and restricted areas.
  - Danger Zone – A defined water (or areas) used for target practice, bombing, rocket firing or other especially hazardous operations for the armed forces. The danger zone may be closed to the public as stated in the regulations.
  - Restricted Area – A defined water area for the purpose of prohibiting or limiting public access to the area. Restricted areas generally provide security for Government property and/or protection to the public from risk of injury.
- Eglin's maritime jurisdiction is defined in 33 CFR 334 and is enforced by the Installation Commander and such agencies he/she may designate.

## Air Force

- **DAFI 36-2646, Security Forces Training and Standardization Evaluation Programs**
  - This regulation sets the training standards for waterborne operations.
- **EAFB 31-101, Integrated Defense Plan**
  - Establishes strategy to protect against threats and improve operations.

***Request advocacy to uphold Federal Regulation***



# CFR Areas of Responsibility

*Mission, People & Partners*





# CFR Areas of Responsibility

*Mission, People & Partners*



## 33 CFR 334.740: North Shore Choctawhatchee Bay Restricted Area 1: Eglin Main Shoreline

- From Weekly Bayou to Bayview Club following the mean high-water line to a distance at 1,000 feet. This area also includes all contiguous inland navigable waters that lie within the land boundaries of Eglin AFB.





# CFR Areas of Responsibility



*Mission, People & Partners*

## 33 CFR 334.730: Waters of Santa Rosa Sound & Gulf of Mexico adj to Santa Rosa Island Restricted Area 2: North Side-Santa Rosa Island

- Follows shoreline 150 feet seaward from the mean high-water line. This area includes all contiguous inland navigable waters which lie within Eglin land boundaries (*Red highlighted area not to scale; does not interfere with intercoastal waterways*)





# CFR Areas of Responsibility



*Mission, People & Partners*

## 33 CFR 334.730: Waters of Santa Rosa Sound & Gulf of Mexico adj to Santa Rosa Island Restricted Area 3: Choctawhatchee Bay, North Side-Hurlburt Field

- Follows shoreline out 200 feet seaward from the mean high-water line







# CFR Areas of Responsibility

*Mission, People & Partners*



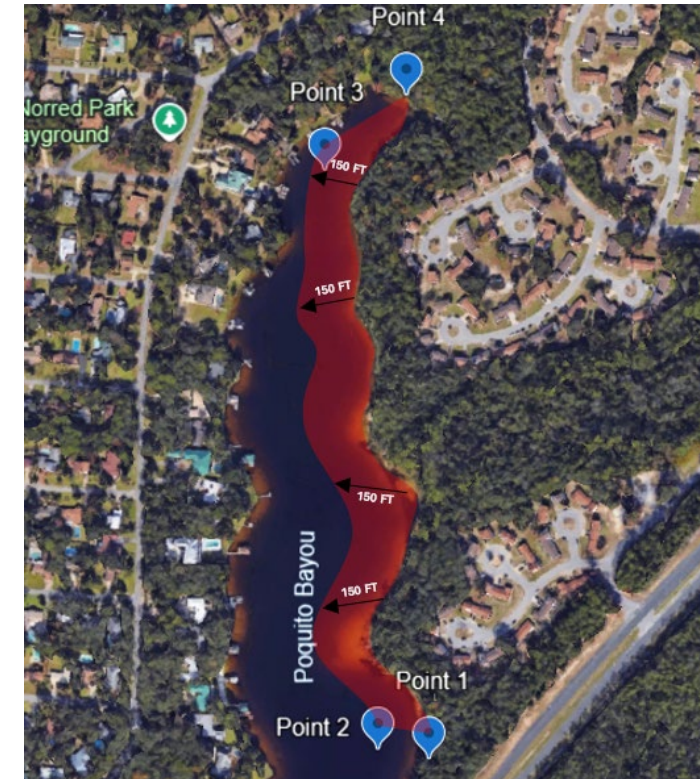
## 33 CFR 334.742: Eglin Camp Pinchot

- Follows shoreline at distance of 300 feet seaward from the mean high-water line



## 33 CFR 334.744: Eglin Poquito Housing

- Follows shoreline at distance of 150 feet seaward from the mean high-water line





# CFR Areas of Responsibility

*Mission, People & Partners*



## 33 CFR 334.746: United States Coast Guard, Destin Station

- Restricted area enforced by U.S. Coast Guard, Destin Station commander & designated agencies



## 33 CFR 334.748: Wynnhaven Beach

- Follows shoreline at distance of 150 feet seaward from the mean high-water line





# Call To Action



*Mission, People & Partners*

**Eglin's Integrated Defense Plan identifies operational requirements to bolster the installation's sea/maritime security to meet today's threats.**

**Phase I:** Installation Commander officially declares Eglin's waters as "RESTRICTED"

**Phase II:** Publish notice to mariners via U.S. Coast Guard, commence public information campaign, update local guidance/checklist and begin soft documented enforcement (brief & release)

**Phase III: \*Contingent upon buoys\*** Restricted waters are enforced equal to exclusive jurisdiction; enforcement could range from a Field Interview up to apprehension

## **Immediate Need: Buoys**

- \$3M for entire Eglin coastline; less for CFR restricted areas only
  - Clearly defined boundary markers
  - Serve as visible deterrent
  - Buoys include signage

## **Complete Maritime Security Operational Need**

- \$27M total cost; includes:
  - Manpower
  - Water Security Equipment
  - Waterside Intrusion Detection System



---

*Mission, People & Partners*

# Questions

# Florida Defense Industry Economic Impact Analysis 2024



Final Presentation – 17 January 2025



# Agenda

---

- **Economic Impact Analysis Overview**
- **Data Trends**
- **State and Regional Impacts**
- **Key Takeaways**

# Economic Impact Analysis Overview

## ■ Economic Impact Analysis

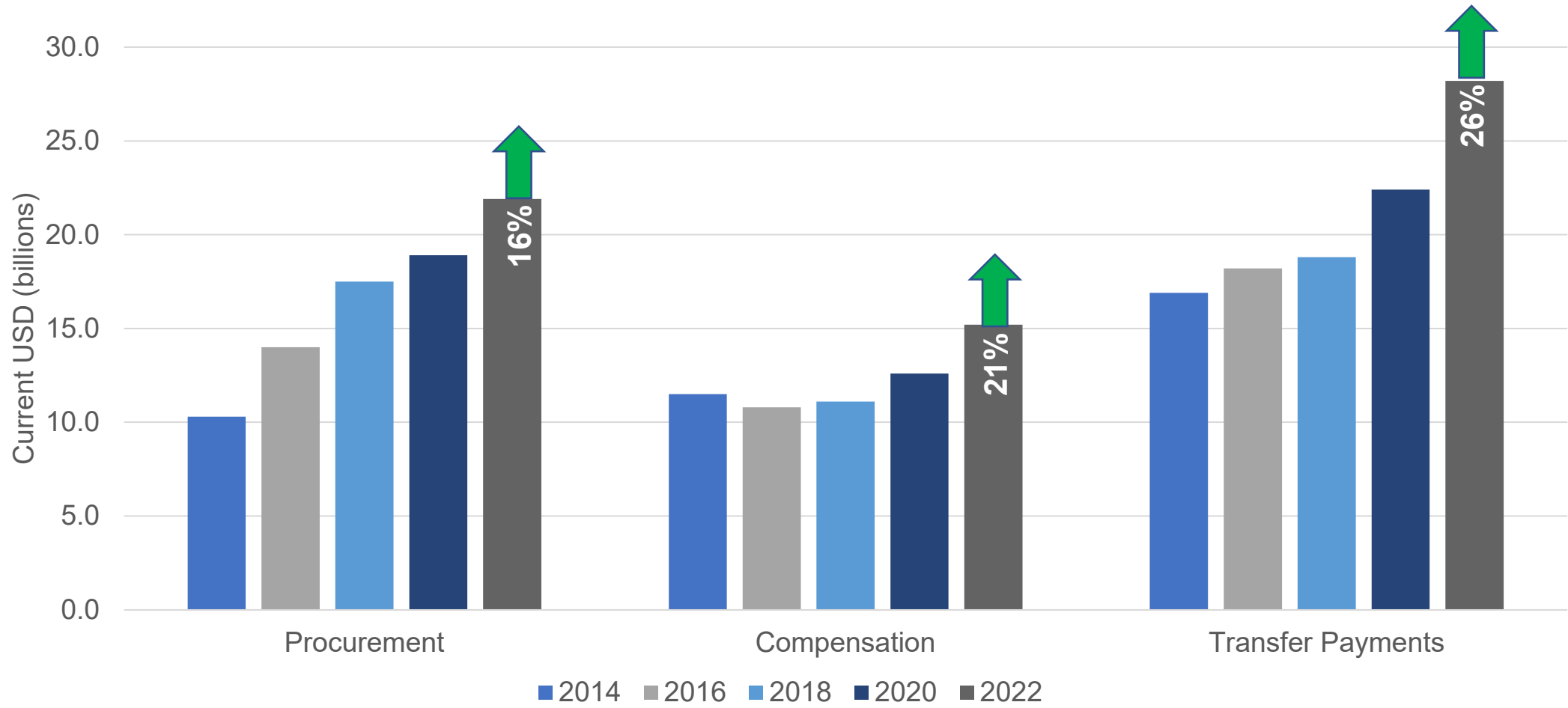
- Estimates how defense spending ripples through the Florida economy
- Captures direct, indirect, and induced spending from 2022
- Each region and county economy are different, leading to varying impacts
- Partnered with FSU Center for Economic Forecasting & Analysis (CEFA)
- Utilized the IMPLAN economic model for county-level impacts and validated state-level with REMI

## ■ Spending Types

- Personnel Compensation (Military and DoD Civilian)
- Procurement (Contracts and Grants from the DoD and USCG)
- Transfer Payments (Veterans Payments and Retiree Pensions)

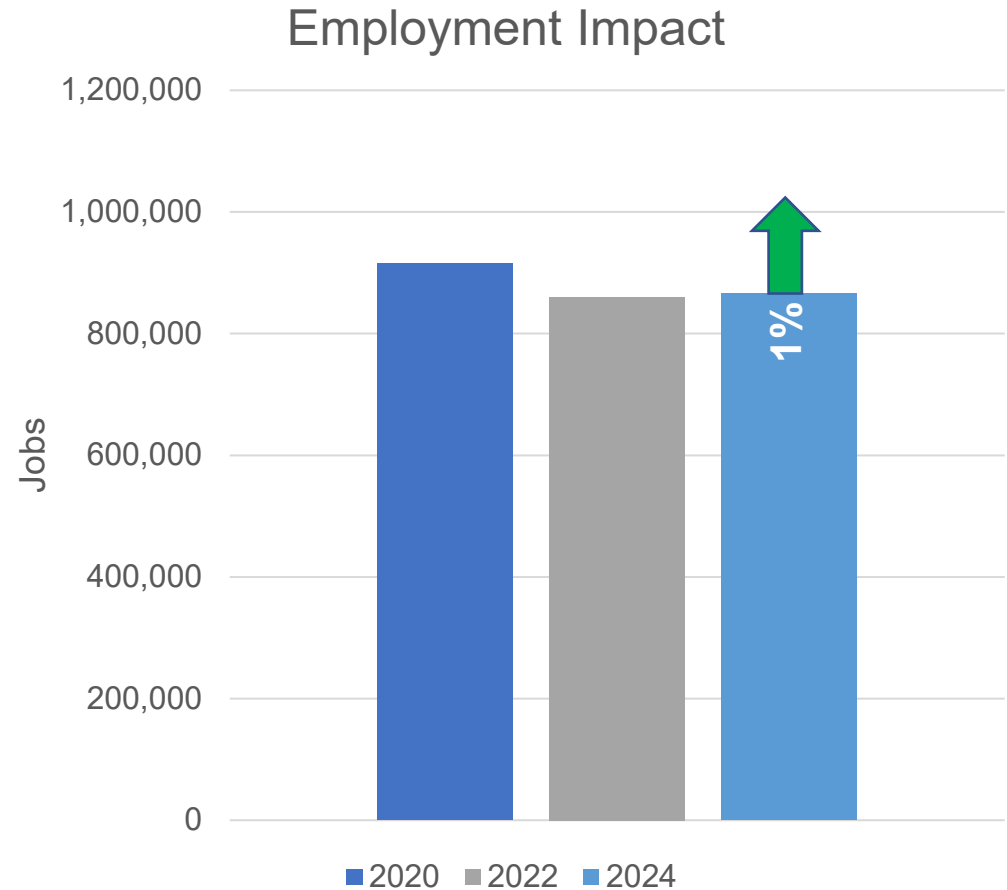
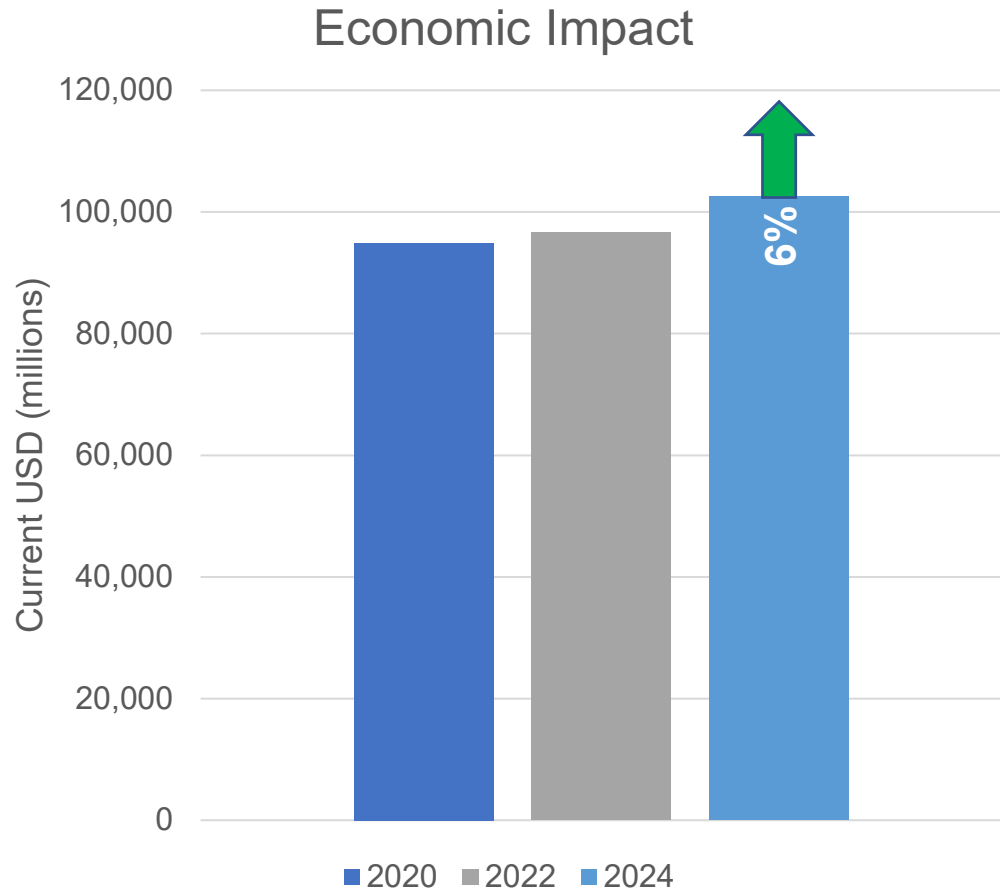
# Florida Defense-Related Spending Trends

Total defense spending was \$65.3 B in 2022 – up 21% since 2020

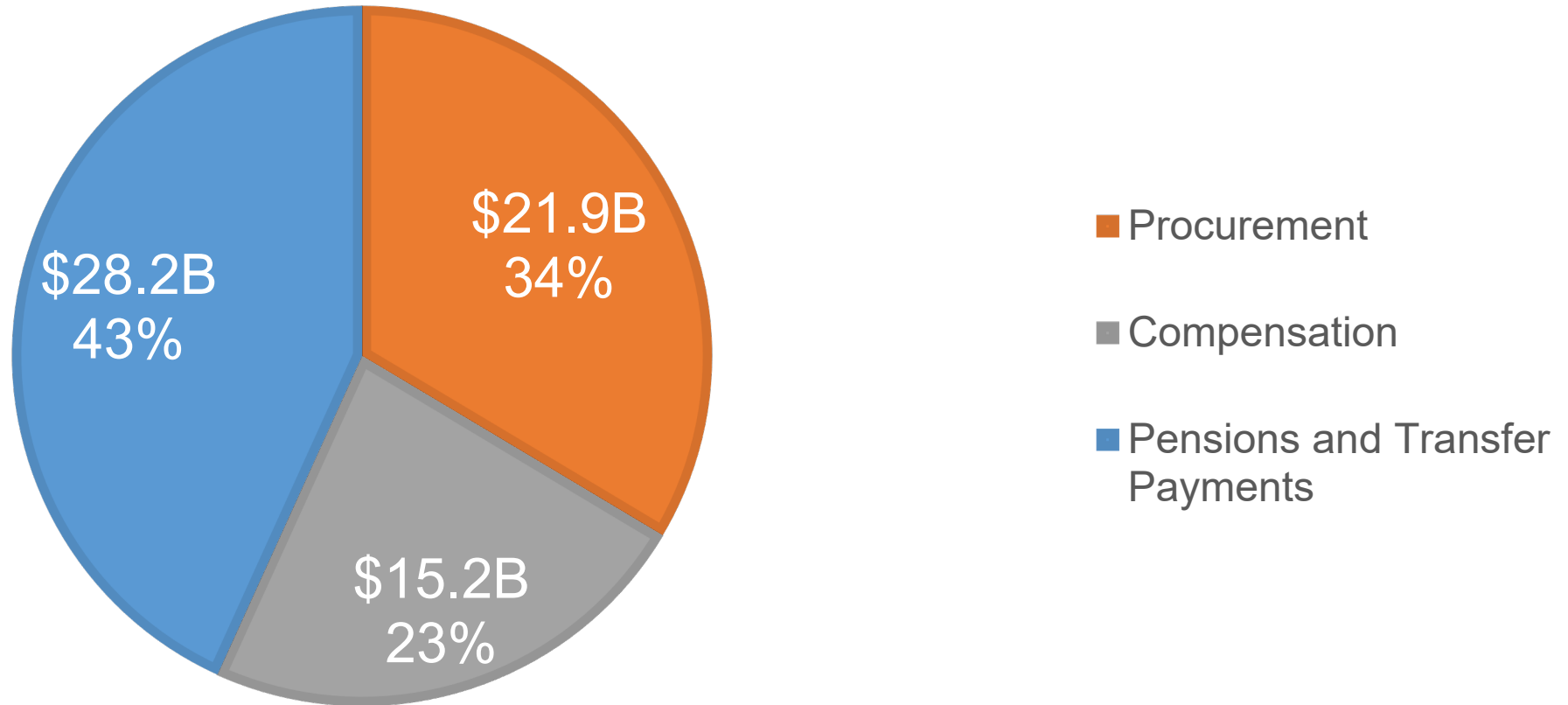




# Florida Defense-Related Impact Trends



# Florida Defense-Related Spending

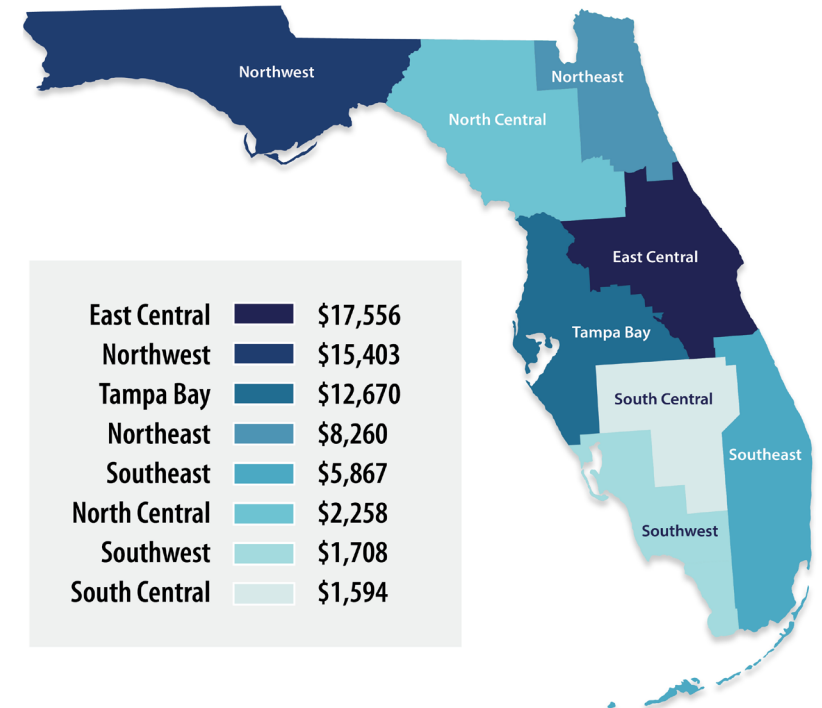


Sources: Bureau of Economic Analysis; Department of Treasury; National Center for Veterans Analysis and Statistics  
Note: values are current USD

# Data Overview: Total Defense Spending

Region	2022 (in billions)	2024 (in billions)	% Change
Northwest	\$12.2	\$15.4	26.3%
North Central	\$1.6	\$2.3	40.3%
Northeast	\$7.5	\$8.3	10.2%
East Central	\$14.2	\$17.6	23.8%
Tampa Bay	\$10.5	\$12.7	20.7%
Southeast	\$5.9	\$7.1	20.5%
South Central	\$0.4	\$0.3	-6.1%
Southwest	\$1.5	\$1.7	13.7%
<b>Total</b>	<b>\$53.9</b>	<b>\$65.3</b>	<b>21.2%</b>

## Total Direct Defense Spending (in millions)



Note: values are current USD

Note: numbers may not sum due to rounding

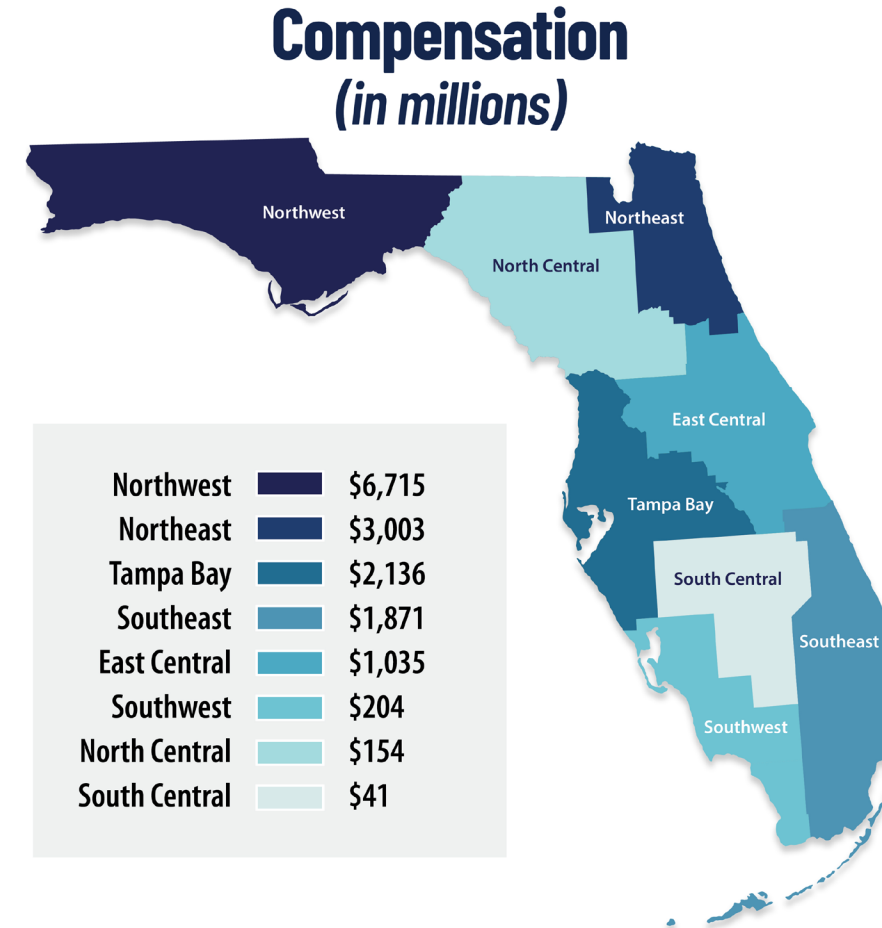
# Data Overview: Personnel Compensation

Region	2022 (in billions)	2024 (in billions)	% Change
Northwest	\$5.7	\$6.7	18.1%
North Central	\$0.16	\$0.15	-4.5%
Northeast	\$2.9	\$3.0	2.9%
East Central	\$0.99	\$1.0	0.9%
Tampa Bay	\$1.5	\$2.1	40.6%
Southeast	\$1.1	\$1.9	68.8%
South Central	\$0.02	\$0.04	87.1%
Southwest	\$0.2	\$0.2	-4.9%
<b>Totals</b>	<b>\$12.6</b>	<b>\$15.2</b>	<b>20.6%</b>

Source: Bureau of Economic Analysis

Note: values are current USD

Note: numbers may not sum due to rounding



# Data Overview: FY22 DoD and USCG Personnel

Top 10 States	Active Duty	Guard/Reserves	Civilian	Total
California	163,393	53,482	61,522	278,397
Virginia	129,492	25,119	96,900	251,511
Texas	114,245	55,124	46,524	215,893
North Carolina	95,999	20,416	21,952	138,367
Florida	66,971	37,444	32,950	137,365
Georgia	63,873	26,512	33,442	123,827
Washington	62,130	17,027	30,779	109,936
Maryland	29,599	18,213	46,439	94,251
Hawaii	40,485	9,546	19,629	69,660
South Carolina	38,322	17,388	10,517	66,227

Source: DMDC

# Data Overview: % Change in Personnel FY20-22

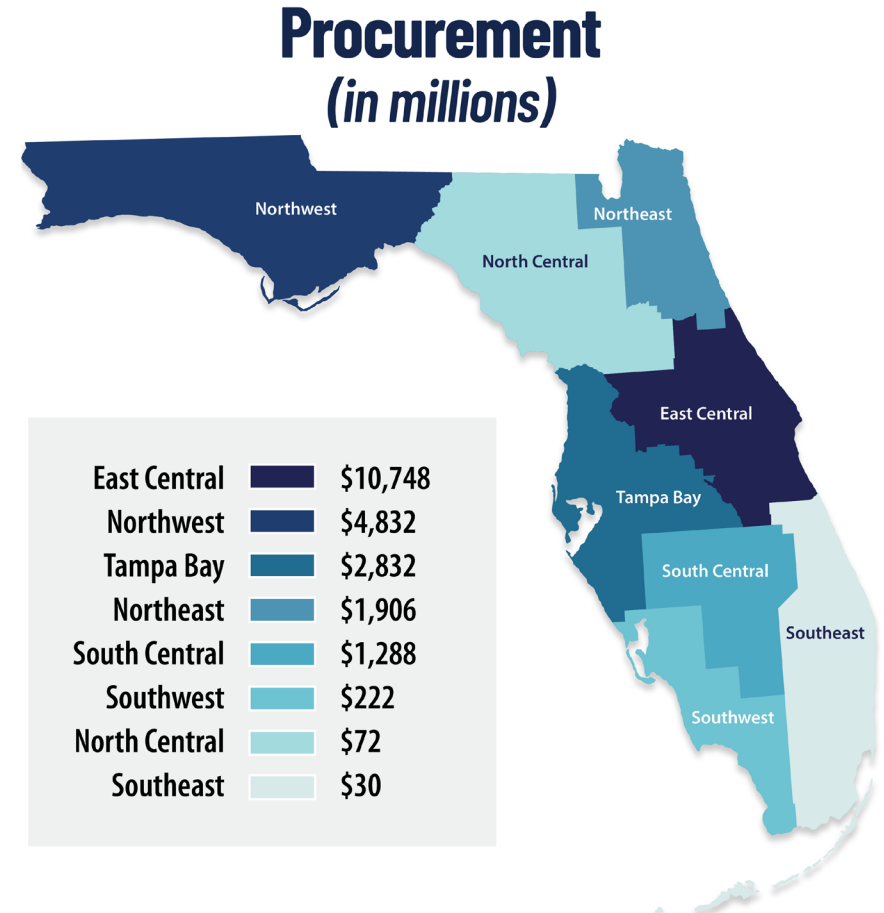
Top 10 States	Active Duty	NG/Reserves	Civilian	Total
California	-2.6%	-6.3%	-5.8%	-4.0%
Virginia	-0.4%	-2.9%	-1.5%	-1.1%
Texas	-2.6%	-1.5%	-3.8%	-2.6%
North Carolina	-5.5%	-4.2%	-2.0%	-4.8%
Florida	-1.1%	-1.6%	-1.3%	-1.3%
Georgia	-7.1%	-4.1%	-4.6%	-5.8%
Washington	4.6%	-5.2%	-3.3%	0.7%
Maryland	-0.6%	-3.1%	-1.5%	-1.5%
Hawaii	-3.1%	-0.5%	-0.7%	-2.0%
South Carolina	-5.5%	-1.9%	-2.9%	-4.2%

Source: DMDC

# Data Overview: Defense Procurement

Region	2022 (in billions)	2024 (in billions)	% Change
Northwest	\$3.4	\$4.8	42.4%
North Central	\$0.2	\$0.07	-58.9%
Northeast	\$1.91	\$1.90	-0.8%
East Central	\$8.8	\$10.7	22.0%
Tampa Bay	\$2.84	\$2.80	-1.7%
Southeast	\$1.5	\$1.3	-12.1%
South Central	\$0.1	\$0.03	-71.4%
Southwest	\$0.23	\$0.22	-3.1%
<b>Totals</b>	<b>\$18.9</b>	<b>\$21.9</b>	<b>15.9%</b>

Source: Department of the Treasury  
 Note: values are current USD  
 Note: numbers may not sum due to rounding



# How Florida Ranks by Procurement Spending

Consistently in top 10 with steady increase in position over last three years

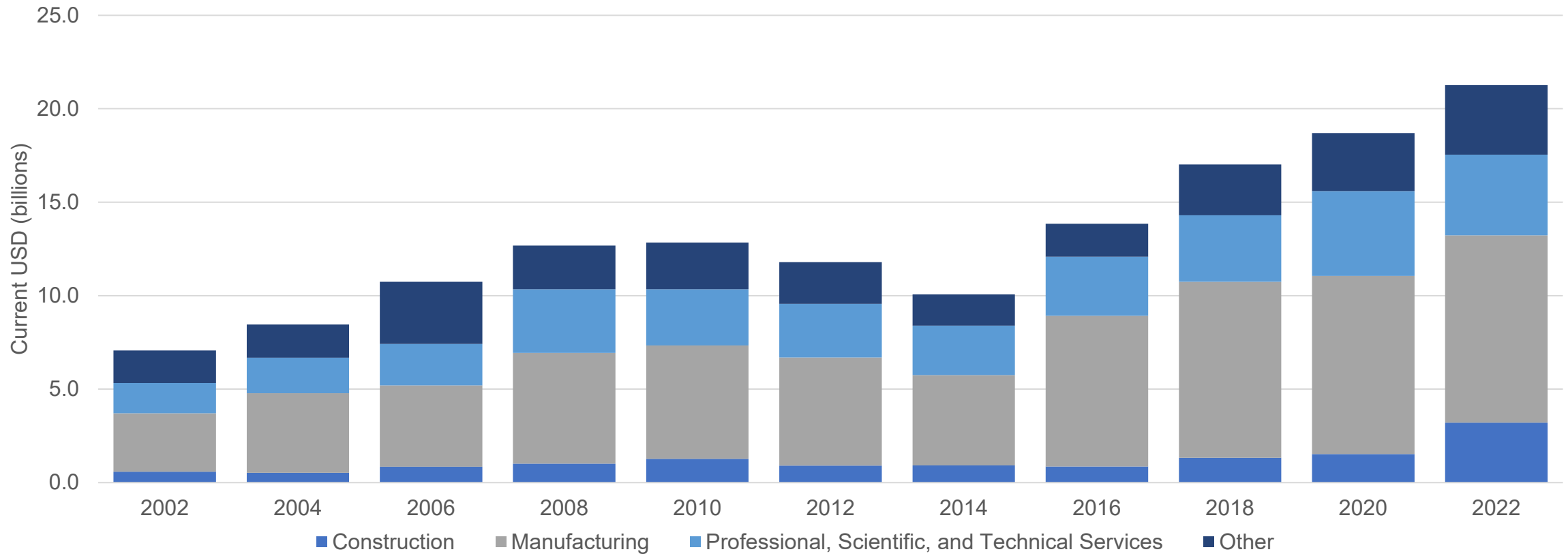
Rank	2009	2010	2011	2012	2013	2014	2015	2016	2017	2018	2019	2020	2021	2022
1	CA	CA	VA	CA	CA	VA	CA	CA	TX	TX	TX	TX	VA	VA
2	VA	VA	CA	VA	VA	CA	VA	VA	VA	VA	VA	VA	CA	TX
3	TX	TX	TX	TX	TX	TX	TX	TX	CA	CA	CA	CA	TX	CA
4	MA	FL	AZ	MD	MD	CT	MD	CT	FL	FL	FL	CT	NY	FL
5	FL	MA	CT	MO	AZ	MD	CT	FL	MD	MD	CT	MD	FL	NY
6	MD	MD	MD	AZ	MA	PA	PA	MD	PA	CT	MD	FL	MD	MD
7	AZ	PA	FL	CT	FL	FL	FL	PA	CT	MO	PA	AZ	MA	CT
8	PA	CT	PA	PA	CT	AZ	MA	MO	AZ	PA	MA	MA	CT	PA
9	CT	AZ	MA	FL	PA	MA	AL	WA	MA	MA	MO	PA	WA	MA
10	MO	MO	AL	MA	MO	AL	AZ	MA	MO	AZ	AZ	MO	PA	AZ

Source: Department of the Treasury



# Defense Contracts Performed in Florida

Manufacturing and Professional, Scientific, & Technical Services industries continue to receive majority of contracts

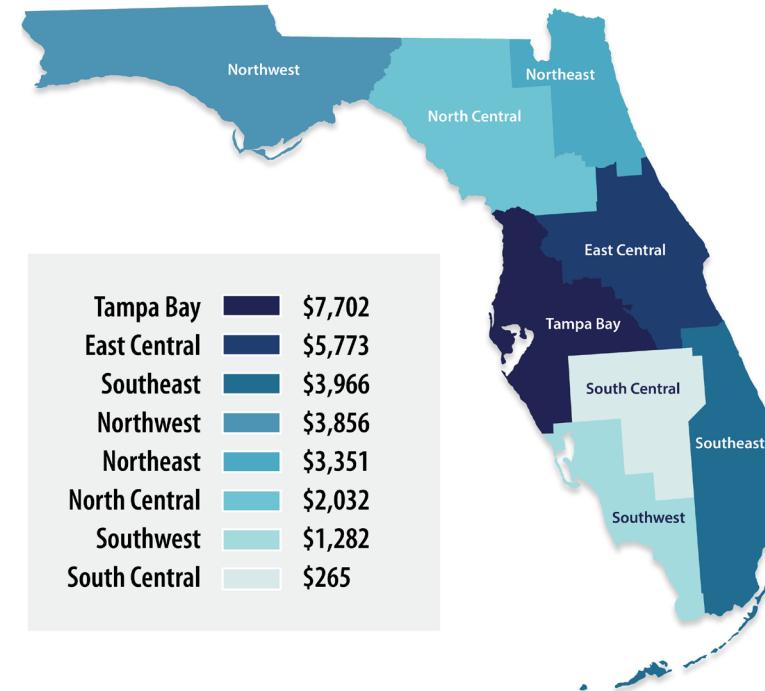


Source: Department of the Treasury

# Data Overview: Pensions and Transfer Payments

Region	2022 (in billions)	2024 (in billions)	% Change
Northwest	\$3.2	\$3.9	23.7%
North Central	\$1.3	\$2.0	53.5%
Northeast	\$2.7	\$3.4	25.7%
East Central	\$4.5	\$5.8	30.0%
Tampa Bay	\$6.2	\$7.7	24.6%
Southeast	\$3.3	\$4.0	21.6%
South Central	\$0.2	\$0.3	14.7%
Southwest	\$1.0	\$1.3	24.4%
<b>Total</b>	<b>\$22.4</b>	<b>\$28.2</b>	<b>25.9%</b>

## Pensions and Transfer Payments (in millions)



Source: National Center for Veterans Analysis and Statistics

Note: values are current USD

Note: numbers may not sum due to rounding

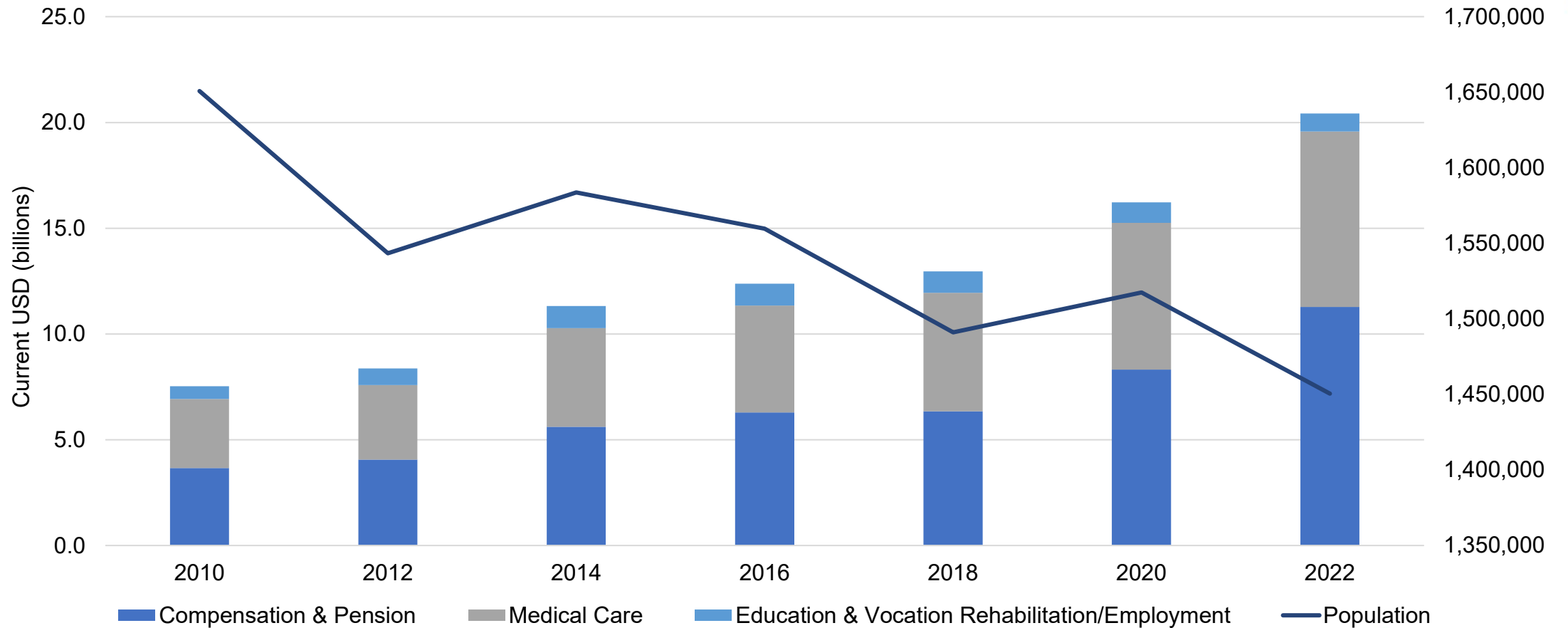
# Data Overview: FY20-FY22 Veteran Pop. Change

State	FY20 Pop	FY22 Pop	Change	%Change
<b>Texas</b>	1,573,737	1,543,168	-30,570	-1.9%
<b>California</b>	1,659,401	1,534,710	-124,690	-7.5%
<b>Florida</b>	1,517,442	1,450,597	-66,845	-4.4%
<b>Pennsylvania</b>	791,914	719,233	-72,681	-9.2%
<b>Ohio</b>	741,602	695,454	-46,148	-6.2%
<b>Virginia</b>	721,894	691,325	-30,569	-4.2%
<b>New York</b>	737,765	688,611	-49,154	-6.7%
<b>North Carolina</b>	698,183	687,364	-10,819	-1.6%
<b>Georgia</b>	696,191	678,304	-17,887	-2.6%
<b>Illinois</b>	605,842	569,448	-36,393	-6.0%
<b>Rest of US</b>	9,721,727	9,264,422	-457,305	-4.7%
<b>Total</b>	19,465,698	18,522,638	-943,060	-4.8%

Source: National Center for Veterans Analysis and Statistics

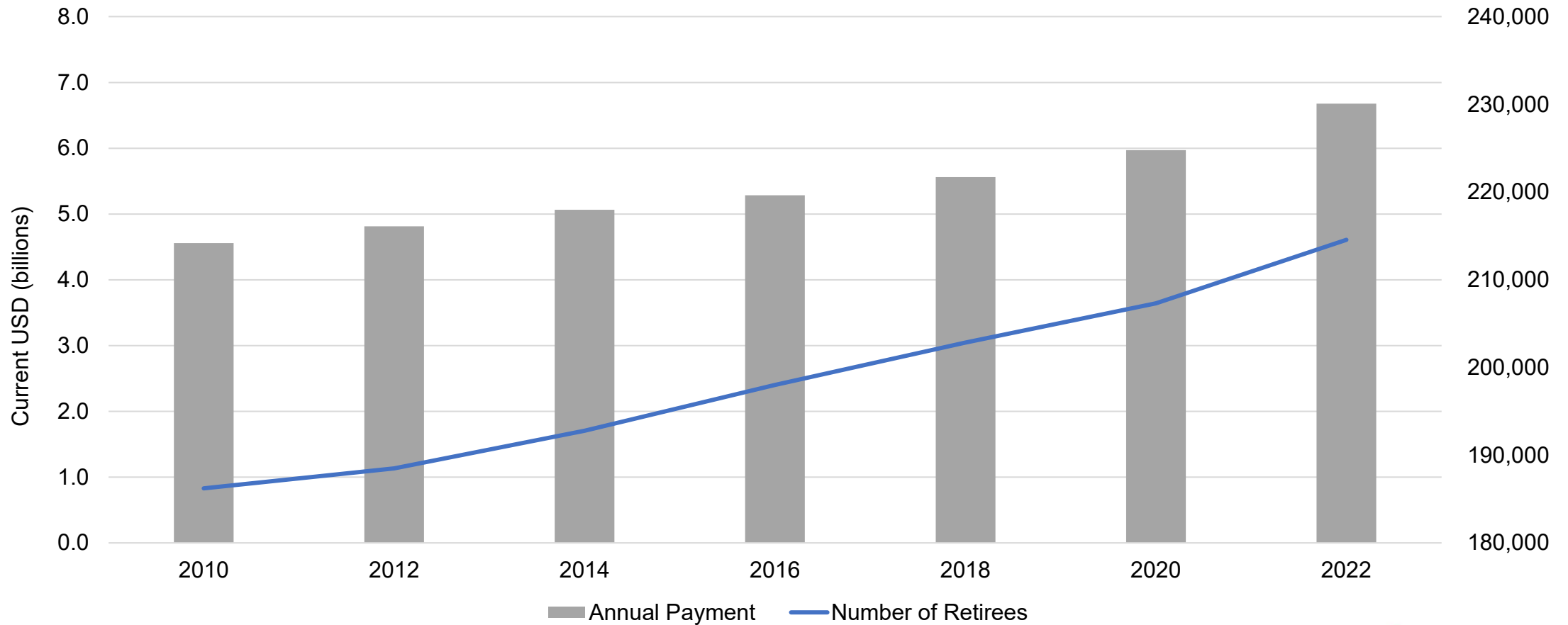
# Historical Veteran Population and Benefits

Total Veteran benefits continue to increase, despite drop in population



# Historical Military Retiree Population and Benefits

Despite Veteran population decline, Florida's military retiree population rises



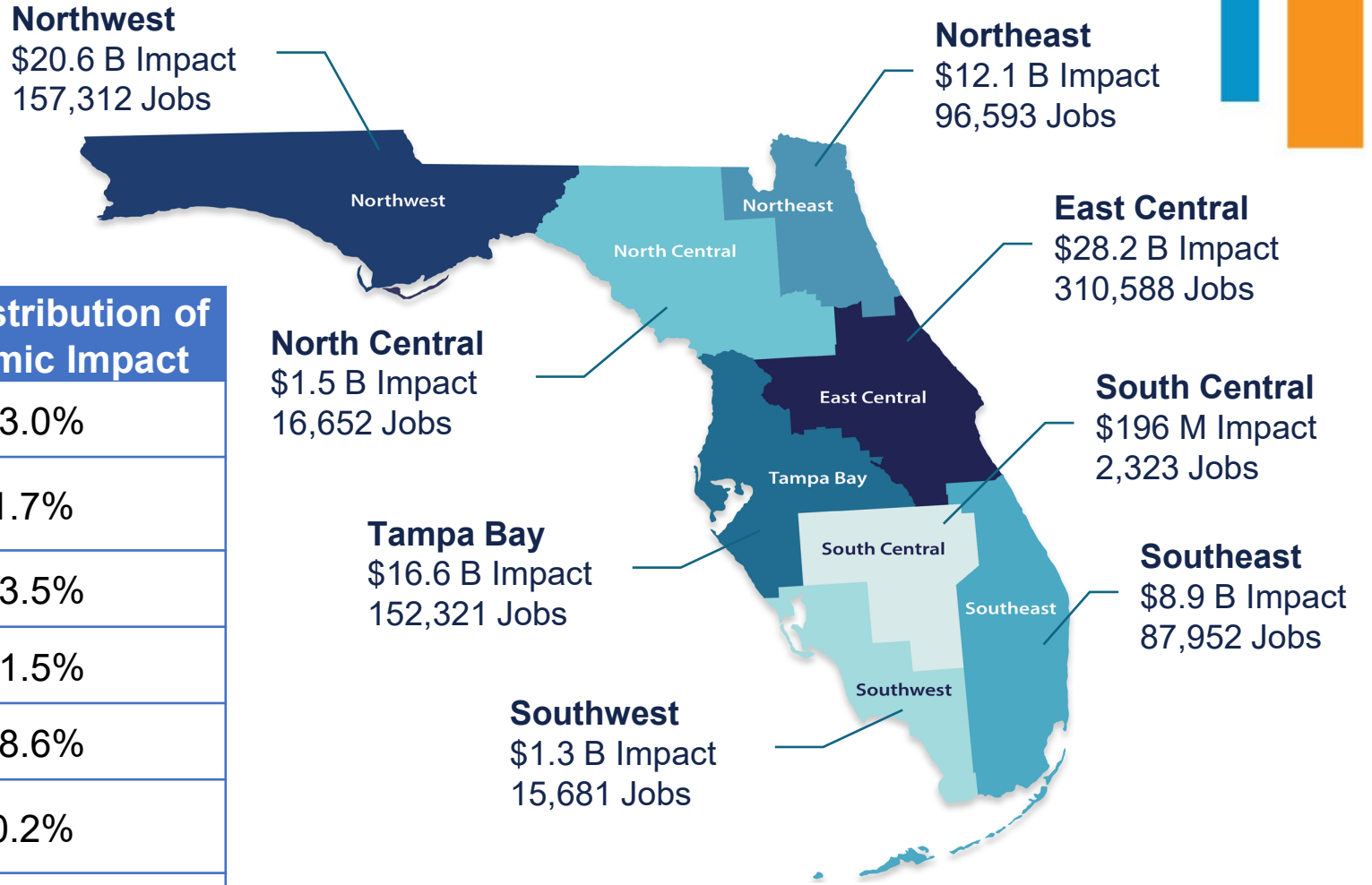
# Statewide Defense Economic Impact

Fiscal Year	2020	2022	Change
Economic Impact (Value Added to GDP)	\$96.6B	\$102.6B	6.2%
% of FL Economy	8.5%	7.3%	-1.2 pp

## Key Takeaways

- Overall Florida economy rebounded positively post-pandemic
- Defense economy increased, but not at the pace of overall economy—good news story
- More volatility in estimated regional/local impacts

# Regional Defense Economic Impacts



Region	2022 Distribution of Economic Impact	2024 Distribution of Economic Impact
Northwest	22.6%	23.0%
North Central	1.9%	1.7%
Northeast	14.9%	13.5%
East Central	21.8%	31.5%
Tampa Bay	20.9%	18.6%
South Central	0.4%	0.2%
Southeast	15.1%	10.0%
Southwest	2.5%	1.5%

# Conclusions

---

- **Florida's defense economy remains robust, contributing over \$102B to GSP and nearly 866,000 jobs**
- **Economic diversification has a wide range of benefits**
  - Enhanced resilience against downturns and external shocks
  - Increased tax base
  - Improved private-sector innovation and synergy
- **The significant rise in procurement supports jobs in high-paying industries**
- **Growing military retiree population brings significant economic benefits**



# Questions



# Okaloosa County

- Total spending increased, yet impacts dropped
- REMI model estimated \$1.9B in salaries equated to \$7.4B in economic impact (3.9:1 ratio)
- IMPLAN model estimated compensation contributed to the economy at a 1.3:1 ratio

Spending Flow	2022 Factbook	2024 Factbook
Procurement	\$1.4B	\$1.3B
Salaries/Compensation*	\$1.9B	\$3.3B
Pensions/Transfers	\$0.9B	\$1.0B
Total Direct Spending	\$4.2B	\$5.6B
Economic Impact	\$9.2B	\$5.4B
% of Economy	63%	33%

\*The 2022 factbook uses salary data, and the 2024 factbook uses compensation data, due to the requirements of the models used

# Methodology Notes

---

- **Defense spending increased in many counties where a decline in economic impact was observed**
- **This suggests the declines stemmed from the different economic model utilized**
  - IMPLAN is significantly more conservative in its estimates of compensation's contribution to GSP than REMI
- **Differences between REMI and IMPLAN highlight the uncertainty that is inherent to economic impact modeling**
  - REMI reflects a more optimistic scenario compared to IMPLAN
- **A large share of veterans' pension and transfer payments leak out due to imports, savings, and taxes**



# NAVAL AIR STATION WHITING FIELD

Providing for our nation's future



# Captain Ted “Thumbs” Elkins

## *Commanding Officer*

2024 – Commander-In-Chief Navy Base of the Year

---

## NAVAL AIR STATION WHITING FIELD

INSTALLATION EXCELLENCE AWARD WINNER

2015 – 2016 – 2018 – 2021 (1<sup>st</sup> Place) & 2023 (2<sup>nd</sup> Place)



# NAS Whiting Field Plant Property



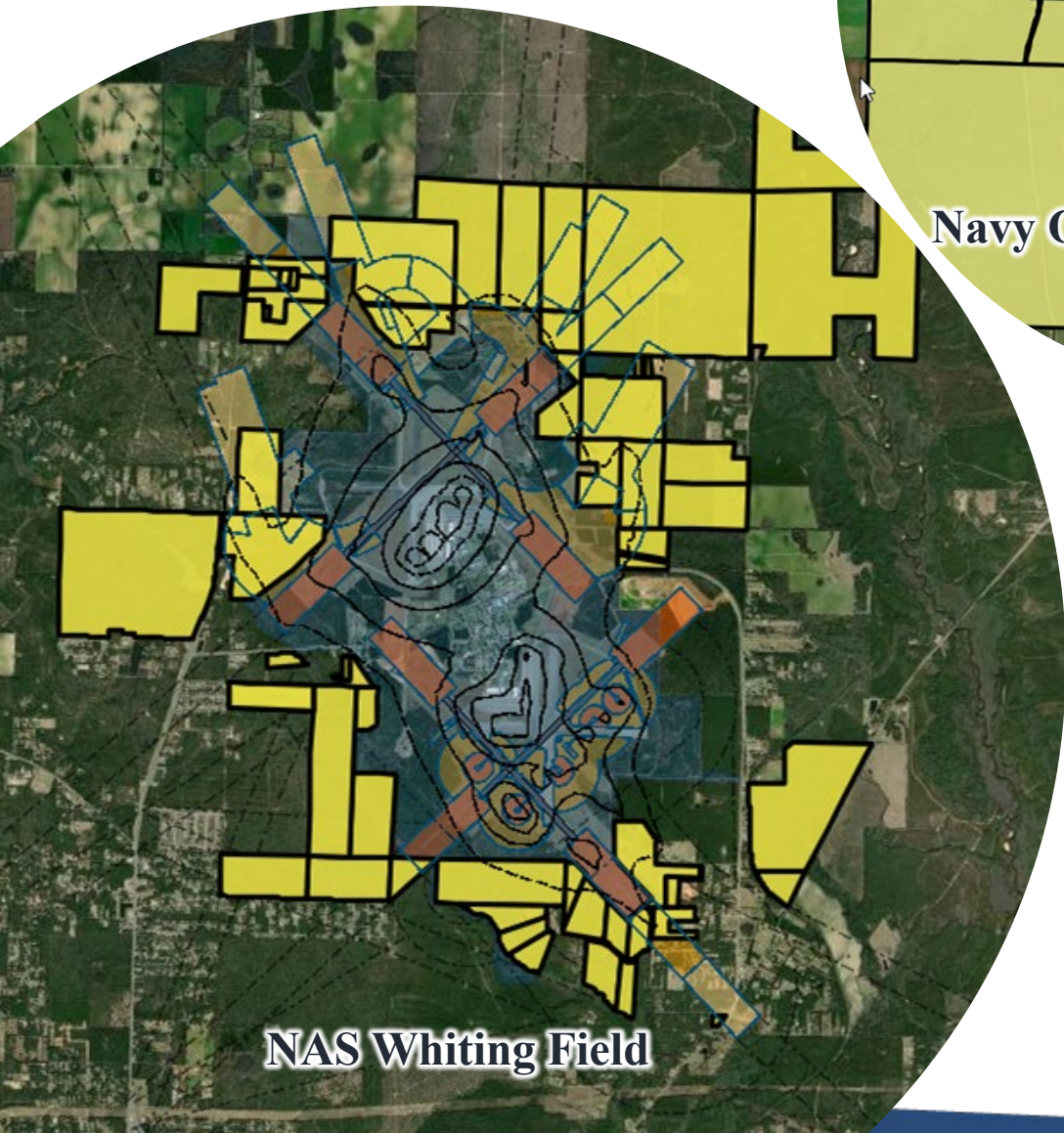
- **17,695** Acres (entire complex)
- **245** Buildings (1,929,287 SF)
- **Services:** Fire, Security, Medical, Dental, MWR, Chapel, NEX, Gas Station, Commissary
- **287** Single Family Housing Units – Whiting Pines
- **95** Navy Gateway Inns & Suites Units
- **30** Unaccompanied Housing Rooms
- **4,408,731** Square Yards of Airfield Pavement
- **7,169** Acres of Total Grounds Maintained
- **92** Miles of Fence Line

**Plant Replacement Value:**

**\$2.28B**



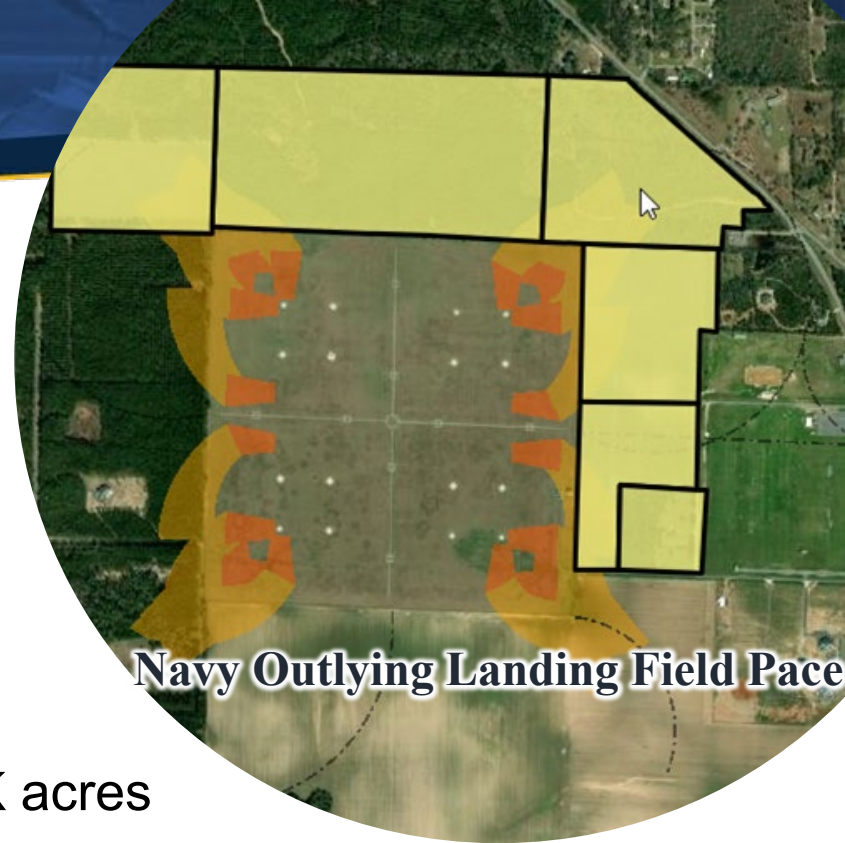
Readiness Environmental  
Protection Initiative (REPI)  
10 U.S.C. §2864a



**NAS Whiting Field**



**Navy Outlying Landing Field X**



**Navy Outlying Landing Field Pace**

- ✓ Protected nearly 20K acres
- ✓ Executed 70+ transactions
- ✓ Expended nearly \$60M in match funding
- ✓ Objectives achieved via multi-year agreements/partner initiatives:
  - Navy & State of Florida
  - Navy & Santa Rosa County
  - Navy & NGOs



# Community – Military Partnering “Whiting Aviation Park Project”



## History

- **2001 - Current**
  - NAS Whiting & County discussed aviation park option to avoid challenges in runway extension to a county-owned public use airport
  - Limited Access Use Agreement approved by ASN (2009)
- **Some Key Facts:**
  - Construction of a taxiway with a controlled access point to the 269-acre county owned park
- **Benefits to Navy**
  - No expansion of Public Airport
  - No incompatible development in critical Safety Areas
  - No cost to USN for any on airport facilities
  - “In-kind” – maintenance/upkeep of existing roads, trails and tertiary areas
- **Benefits to County**
  - Agreement allows use of NAS Whiting runways (limited to MRO activities)
  - Construction of a taxiway with a controlled access point to the 269-acre county owned park
  - Economic opportunity for aviation/industrial growth



# Infrastructure – Project Collaboration – Buffering

## *Examples of Grants used in State of Florida & DoD*



### ■ Florida Defense Grants – Enterprise Florida

- Defense Infrastructure Grant Program (DIG) – **\$500K – \$1M**
- Defense Reinvestment Grant Program (DRG) – **\$500K – \$1M**

### ■ Office of Local Defense Community Cooperation (OLDCC)

- DCIP – Defense Community Infrastructure Program – **\$100M**
- MISP – Military Installation Sustainability Program – **\$1M+**
- CNMP – Community Noise Mitigation Program – **\$75M**

### ■ Florida Defense Support Task Force Grants

- Florida Department of Economic Opportunity – **\$500K – \$1M**

### ■ FEMA

- BRIC – Building Resilient Infrastructure & Communities – **\$2B**

### ■ Florida Fish & Wildlife

- Conservation Commission – Invasive Plant Management – **\$6M - \$9M**
- National Lands Day Grant – Clear Creek Trail – **\$1M**
- National Coastal Resilience Fund – **\$140M**

### ■ Readiness Environmental Protection Integration (REPI) coupled with several match programs:

- Forest Legacy Funds (USDA) – **\$150M**
- America the Beautiful – **\$119M**
- NOAA – National Oceanic & Atmospheric Administration – **\$9M**
- GCPEP/Longleaf Restoration Grant – **\$1M**
- Florida Forever Program – **\$100M**
- Acres for America – **\$100M**
- REPI Resiliency Grant Program – **\$1M - \$3M**

# TH-73 Characteristics



Navy plans to acquire 130 TH-73A helicopters

New frame will replace installation's 35-year-old TH-57 "Sea Ranger"

Acquired as a "system" that will bring infrastructure and employ an aircraft that improves pilot training & skills using current cockpit technologies and modernized training curriculum - "high quality, more efficient and mission ready to meet challenges in the fleet."

## General Characteristics

**Contractor:** AgustaWestland

Philadelphia Corporation (Leonardo)

**Date Deployed:** First delivery July 2021

**Propulsion:** Pratt & Whitney PT6B-37A turbo shaft engine

**Length (rotors turning):** 42 feet, 5 inches (12.92 meters)

**Height:** 10 feet, 9 inches (3.29 meters)

**Rotor Diameter:** 35 feet, 6 inches (10.83 meters)

**Weight (baseline empty weight):** 3,325 pounds (1,508 kg)

**Airspeed:** 152 knots

**Ceiling:** 15,000 feet

**Range:** 357 nautical miles

**Crew:** Two (instructor pilot, student pilot); plus, three passengers

# NAS Whiting – The Crown Jewel in Aviation Excellence





**Command Update**  
for  
**Florida Defense Support Commission**  
January 17, 2024



**CDR Nicholas Alfano**  
**Executive Officer**

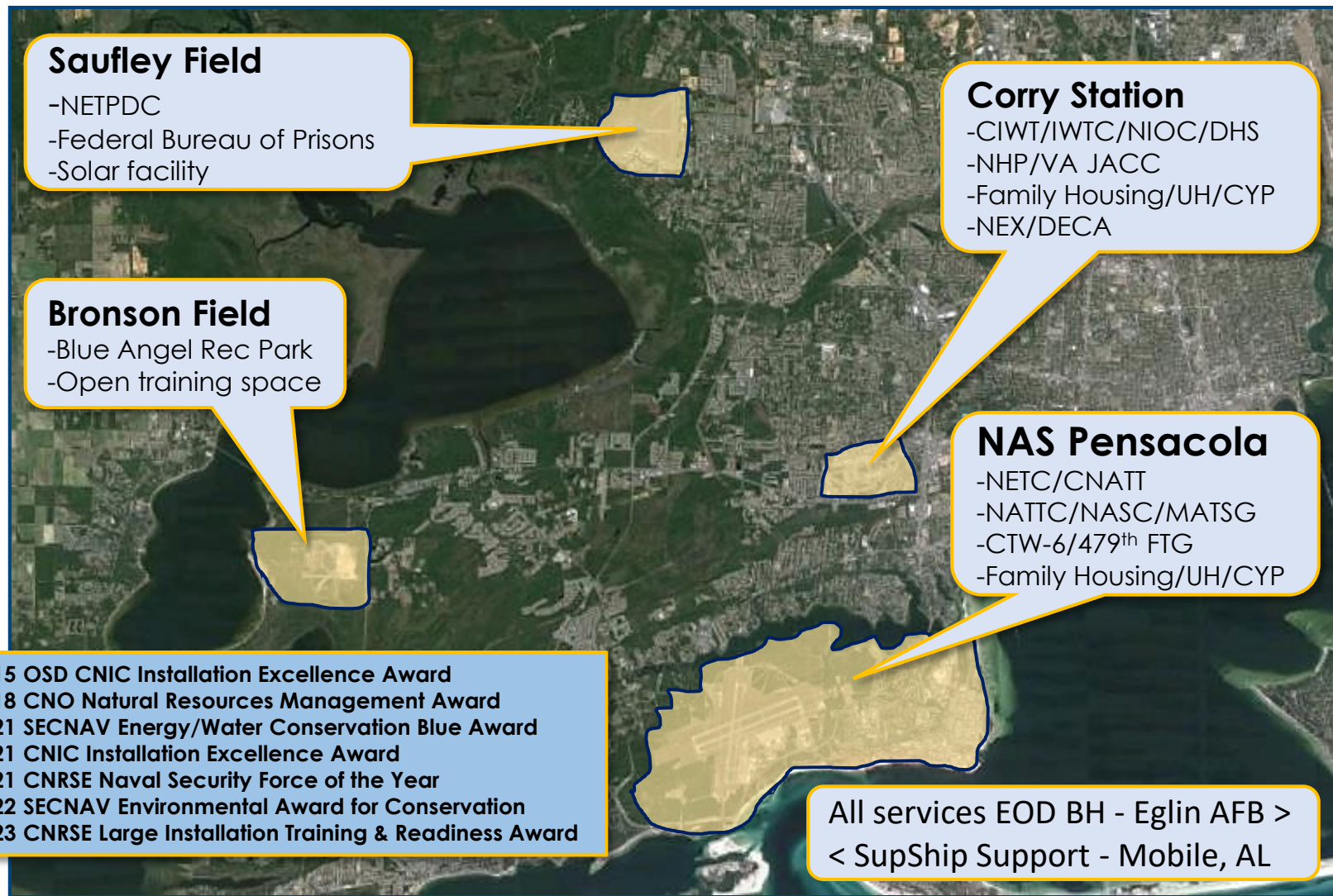


**CAPT Chandra Newman**  
**Commanding Officer**



**CMDCM James Wallace**  
**Command Master Chief**

## Area of Responsibility



## Installation by the Numbers

- 15,395 acres at 4 distinct sites
  - Plant Replacement Value: \$9.4B
  - 11.6M SF of non-housing buildings
  - 631 buildings / 2,129 facilities
- 126 tenant commands
  - 16,000 military personnel
  - 7,400 civilian employees
- Housing
  - Family: 547 units
  - Unaccompanied: 31 buildings, 5,025 rooms, 11,375 beds
- 1 National Historic Landmark District
  - 8 historic districts; 200 structures
- 1 of 4 installations in the US with an active airfield / deep-water port
- Navy's 2nd largest training base





## Training onboard NAS Pensacola

- Aviation Maintenance
- Aviators for Navy/Marine Corps/USCG/Air Force & Foreign Allies
- Rescue Swimmers
- Water Survival
- Information Technology
- Cryptology
- Intelligence
- Cyber warfare
- Aviation Safety
- Aviation Physiology
- Enlisted Aircrew
- Flight Surgeons
- International Partners



**59,000 students graduate annually; NASP is critical to the resiliency of the Naval Aviation and Information Warfare Enterprises**

## Operations

### *Supporting Training and Fleet Requirements*

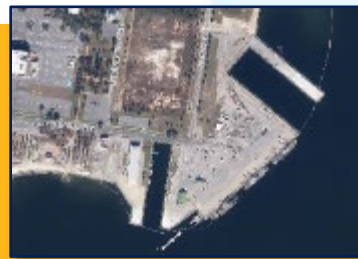
#### Air

- TRAWING SIX (USN) Aircraft
  - 43 T-6A, 21 T-45
- 479<sup>th</sup> FTG (USAF) Aircraft
  - 24 T-6A, 21 T-1A
- Blue Angels Flight Demo Squadron
  - F/A 18 Super Hornets, C-130J
- Fleet detachment training
- Dual 8,000 ft. East-West runways
- 7,100 ft. North-South runway
- Airspace: 18,000 square miles



#### Port

- Navy's only deep-water port in the Gulf of Mexico (when dredged to 44')
- US Coast Guard Homeport
  - USCGC Diligence
  - USCGC Reliance
  - USCGC Walnut 225' Buoy Tender
- Full service main pier / 2 auxiliary piers
- Fully certified weapons handling pier



# Community Partnerships / Local Economic Impact

*Active in building a stronger community for NAS Pensacola and local residents*

**Partnerships:** Active partnerships with local civic governmental agencies: Mayor, County Commissioners, School District, law enforcement, fire & emergency services, land use planning and health care.

**Civic Engagement:** Partnerships with local civic groups to improve the local community and base installations. Chamber of Commerce - Military Affairs Committee, Northwest Florida Defense Coalition, West Florida Economic Development Agency, Joint Education Council, Navy League, Rotary Clubs.

**Conservation:** Working closely with local, federal and state agencies to preserve and protect natural habitats onboard and near the base.

**\*Economic Impact to Escambia County:**

Gross Economic Impact Through:

- Income
- State/Local Taxes
- Procurement

**\$4B**

**20% of the Economy**

**Total defense supported jobs in Escambia County: 32K**

\*Source: Florida Military & Defense Economic Impact Summary - Jan 2024

## Top Challenges

- Hurricane Sally Repairs
  - \$430M of work awarded for original program in 2022
  - Multi-year repair project; positive improvements to existing, 2 new facilities
  - \$41M additional work awarded in July 2024
  - \$181M additional work for FY25
- Aging Infrastructure
  - Deferred maintenance increases risk to tenant command missions and QOL/QOS
- Resiliency
  - 17 miles of coastline; protection of critical infrastructure
  - Utilities, fiber
- Public Access
  - Balancing access to public interests areas with installation mission



## The Command So What?

- NAS Pensacola is a critical part of the Chief of Naval Operations' priorities – warfighting, warfighters, and the foundations that support them.
- From the land, air, sea, space and cyberspace – the Fleet begins here at NAS Pensacola and Corry Station.
  - 60% of the Fleet starts here
  - Everything “sensing & sense-making” in information warfare
  - Everything kinetic in aviation flight, maintenance and control
  - Mission operations in cyber and logistics
- We develop and prepare our Warfighters; the largest Navy schoolhouse outside of Recruit Training Command (RTC) Great Lakes, IL.
- NAS Pensacola is the Navy Foundation that builds Warfighters.



***Thank You!***



***CAPT Chandra Newman  
Commanding Officer  
Naval Air Station Pensacola***

