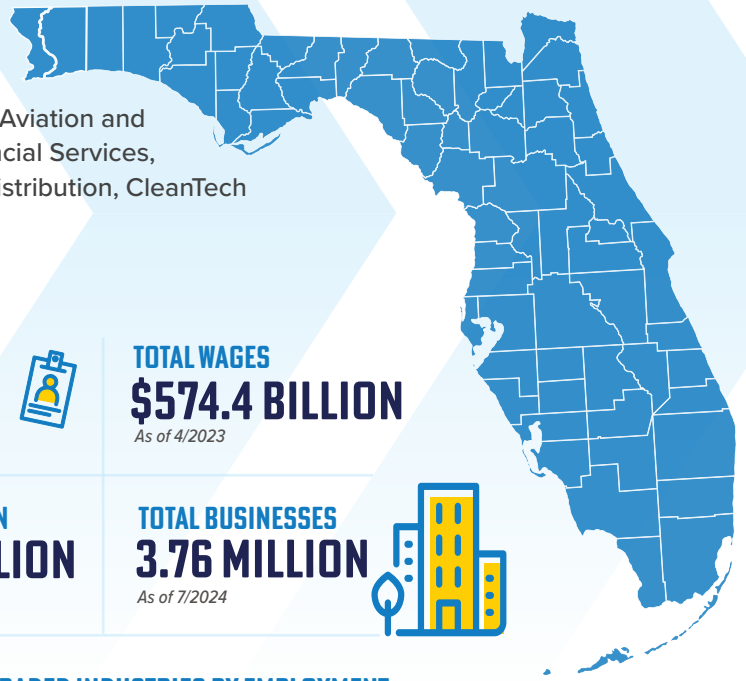


THE FUTURE IS BRIGHT IN THE SUNSHINE STATE

Florida has a diverse economy with industries such as Aviation and Aerospace, Military and Defense, Manufacturing, Financial Services, Information Technology, Life Sciences, Logistics and Distribution, CleanTech and Professional Services.



ECONOMIC ADVANTAGES



\$1.6 TRILLION
STATEWIDE GDP
in 2024

TOTAL EMPLOYMENT
10 MILLION
As of 11/2024



TOTAL WAGES
\$574.4 BILLION
As of 4/2023

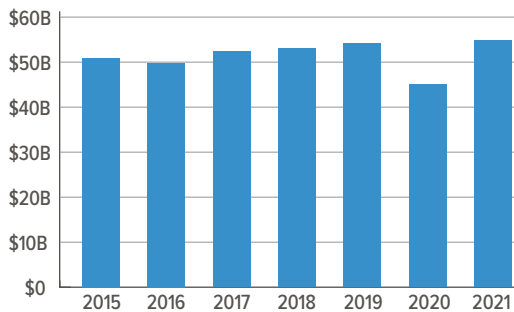
POPULATION
22 MILLION
in 2023



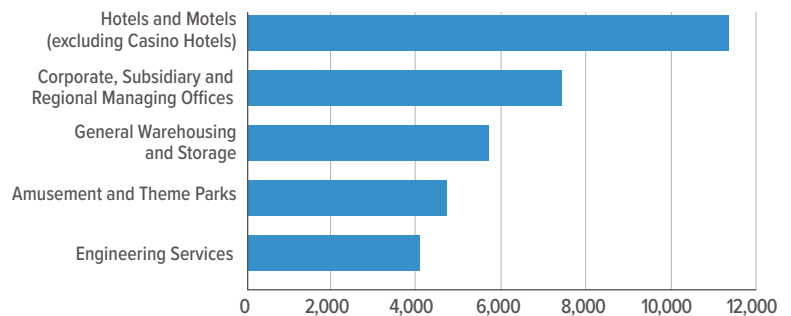
TOTAL BUSINESSES
3.76 MILLION
As of 7/2024



REGIONAL EXPORTS *from 2015 - 2021*



TOP TRADED INDUSTRIES BY EMPLOYMENT *in 2022*



LOGISTICS AND ACCESSIBILITY ADVANTAGES



\$39.9 BILLION
TOTAL EXPORTS

Total Exports by Port in 2022



21
REGIONAL AND INTERNATIONAL AIRPORTS

\$692.7 MILLION
IN BROADBAND INVESTMENTS

From 2019-2023



SPOTLIGHT ON THE ECONOMIC IMPACT OF THE DEFENSE INDUSTRY

In 2022, the \$65.3 billion in direct defense-related spending flowing into the state of Florida supported over 865,937 jobs and generated \$102.6 billion in value-added economic impacts across the state.

TOTAL STATEWIDE IMPACT IN 2022

Statewide Economic Impact	\$102.6 Billion
Percent of Economy	7.3%
Employment	865,937 Jobs

DIRECT DEFENSE SPENDING IN 2022

Procurement	\$21.93 Billion
Salaries	\$15.16 Billion
Pensions & Transfers	\$28.23 Billion
Total Defense Spending	\$65.32 Billion

TARGET SECTOR ADVANTAGES

These industry sectors are creating jobs and driving innovation in Florida.
The data is from 2022.

	SECTOR EMPLOYMENT	BUSINESSES IN SECTOR	SECTOR WAGES
AVIATION AEROSPACE	118,497	2,590	\$3.2B
MILITARY AND DEFENSE	229,466	26,177	\$8.6B
MANUFACTURING	389,166	22,221	\$8.3B
FINANCIAL SERVICES	387,626	41,601	\$11.6B
INFORMATION TECHNOLOGY	182,083	28,697	\$6.4B
LIFE SCIENCES	33,565	1,878	\$843M
LOGISTICS AND DISTRIBUTION	711,414	60,527	\$14.2B
CLEANTECH	111,944	10,024	\$3.6B
PROFESSIONAL SERVICES	716,627	132,395	\$21B

TALENT PIPELINE ADVANTAGES

Florida's extensive network of higher education facilities and institutions drive workforce supply and innovation in the state.

ALL DISCIPLINES
1.5M STUDENTS

BUSINESS MANAGEMENT, MARKETING AND RELATED SUPPORT
198K STUDENTS

SCIENCE, TECHNOLOGY, ENGINEERING AND MATH
136.6K STUDENTS

COMPUTER AND INFORMATION SCIENCES AND SUPPORT SERVICES
49.4K STUDENTS

BIOLOGICAL AND BIOMEDICAL SCIENCES
32.9K STUDENTS

ENGINEERING
26.7K STUDENTS

ENGINEERING TECHNOLOGIES AND ENGINEERING-RELATED FIELDS
13.9K STUDENTS

WORKFORCE ADVANTAGES

WORKFORCE SIZE AND GROWTH *between 2013 -2022*

